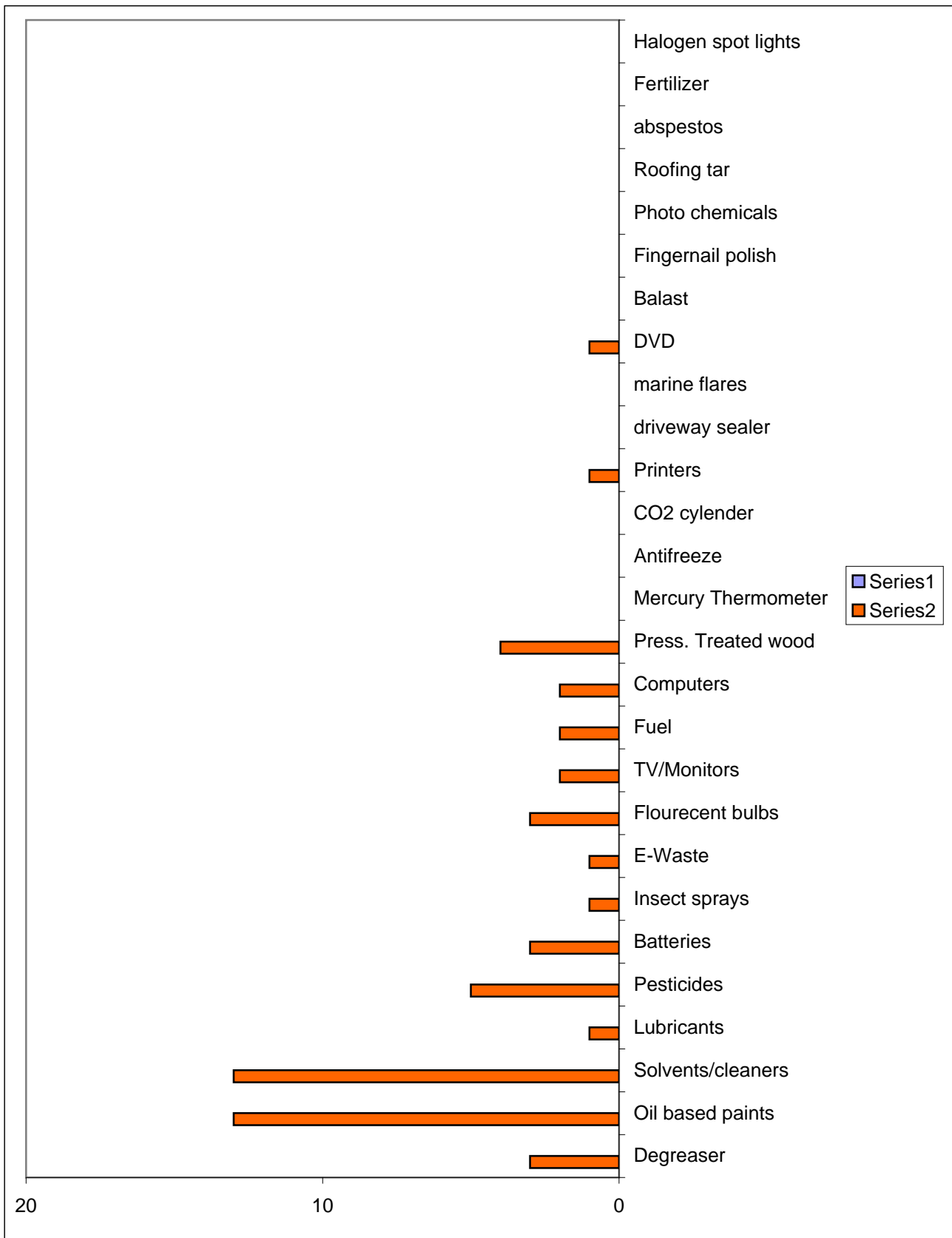


May 12th 2013
Est. 370 vehivles
29 surveys
Question 1

What Types of waste are you dropping off today?

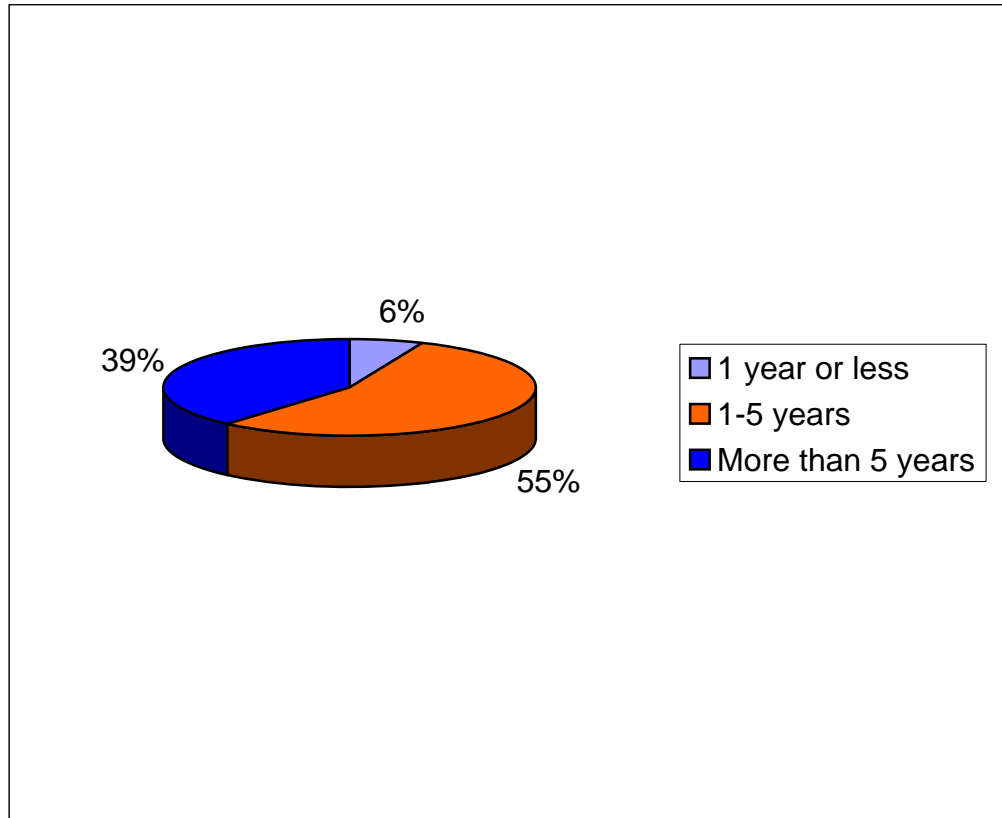
| | Totals |
|---------------------|---------------|
| Degreaser | 3 |
| Oil based paints | 13 |
| Solvents/cleaners | 13 |
| Lubricants | 1 |
| Pesticides | 5 |
| Batteries | 3 |
| Insect sprays | 1 |
| E-Waste | 1 |
| Flourecent bulbs | 3 |
| TV/Monitors | 2 |
| Fuel | 2 |
| Computers | 2 |
| Press. Treated wood | 4 |
| Mercury Thermometer | 0 |
| Antifreeze | 0 |
| CO2 cylender | 0 |
| Printers | 1 |
| driveway sealer | 0 |
| marine flares | 0 |
| DVD | 1 |
| Balast | 0 |
| Fingernail polish | 0 |
| Photo chemicals | 0 |
| Roofing tar | 0 |
| abspestos | 0 |
| Fertilizer | 0 |
| Halogen spot lights | 0 |



Question 2

How long have you had these waste ?

| | Total |
|-------------------|--------------|
| 1 year or less | 2 |
| 1-5 years | 17 |
| More than 5 years | 12 |

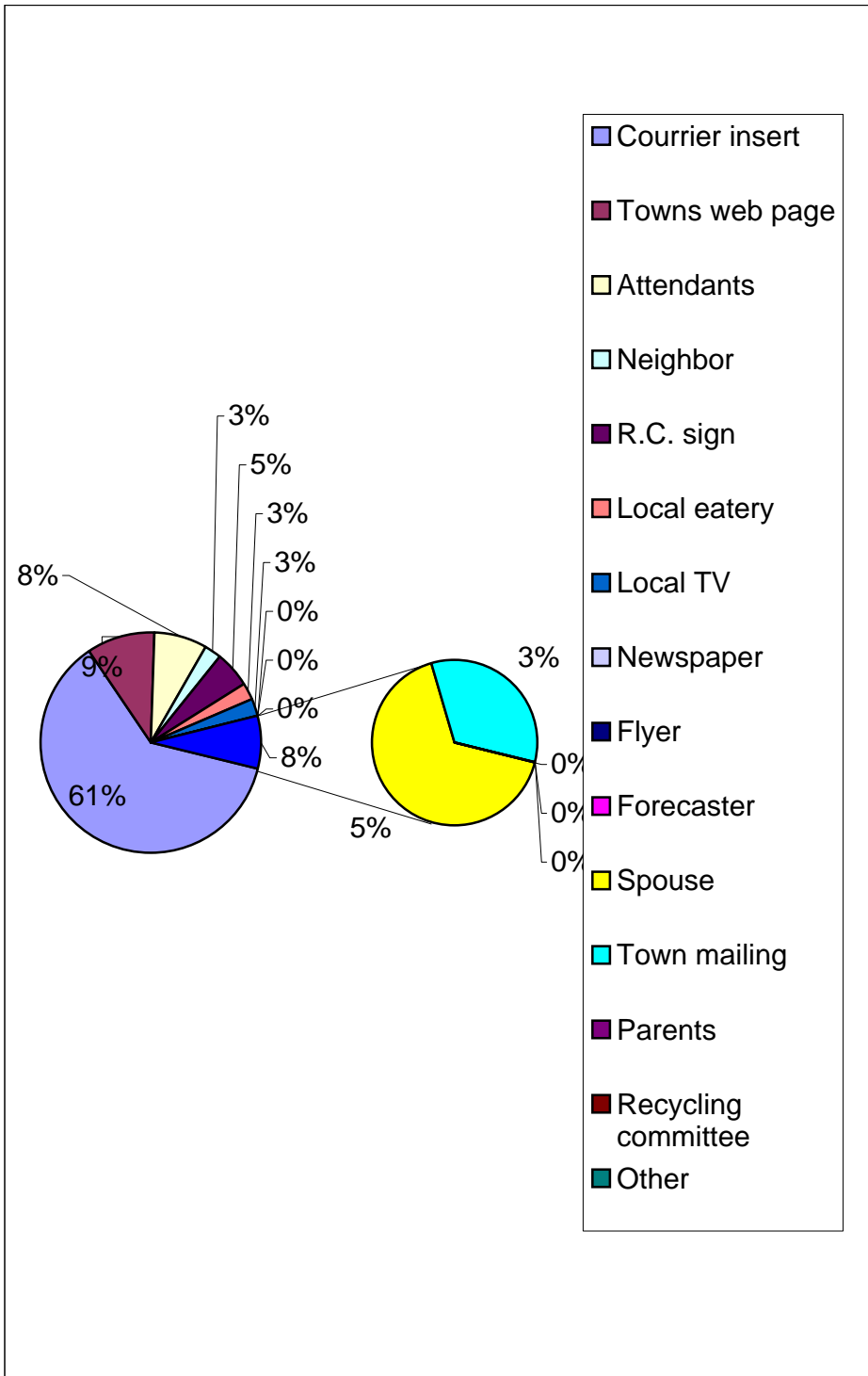


Question 3

How did you here about todays event ?

Total

| | |
|---------------------|----|
| Courrier insert | 24 |
| Towns web page | 4 |
| Attendants | 3 |
| Neighbor | 1 |
| R.C. sign | 2 |
| Local eatery | 1 |
| Local TV | 1 |
| Newspaper | 0 |
| Flyer | 0 |
| Forecaster | 0 |
| Spouse | 2 |
| Town mailing | 1 |
| Parents | 0 |
| Recycling committee | 0 |
| Other | 0 |

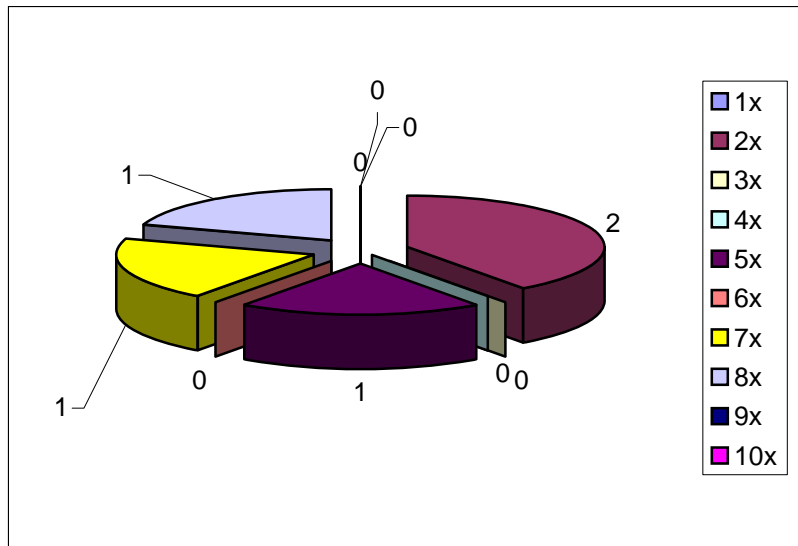
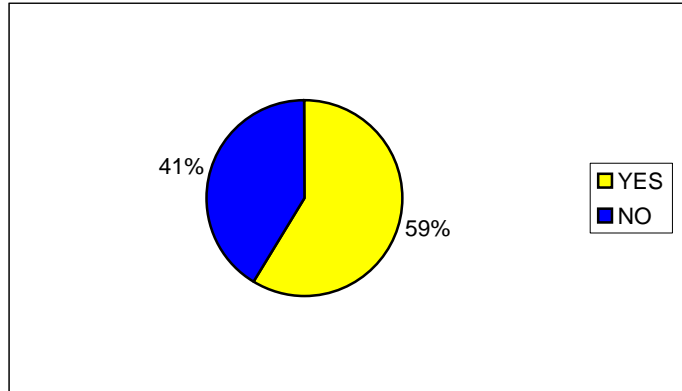


- Courrier insert
- Towns web page
- Attendants
- Neighbor
- R.C. sign
- Local eatery
- Local TV
- Newspaper
- Flyer
- Forecaster
- Spouse
- Town mailing
- Parents
- Recycling committee
- Other

Question 4

Have you participated in a previous HHW waste collection event?

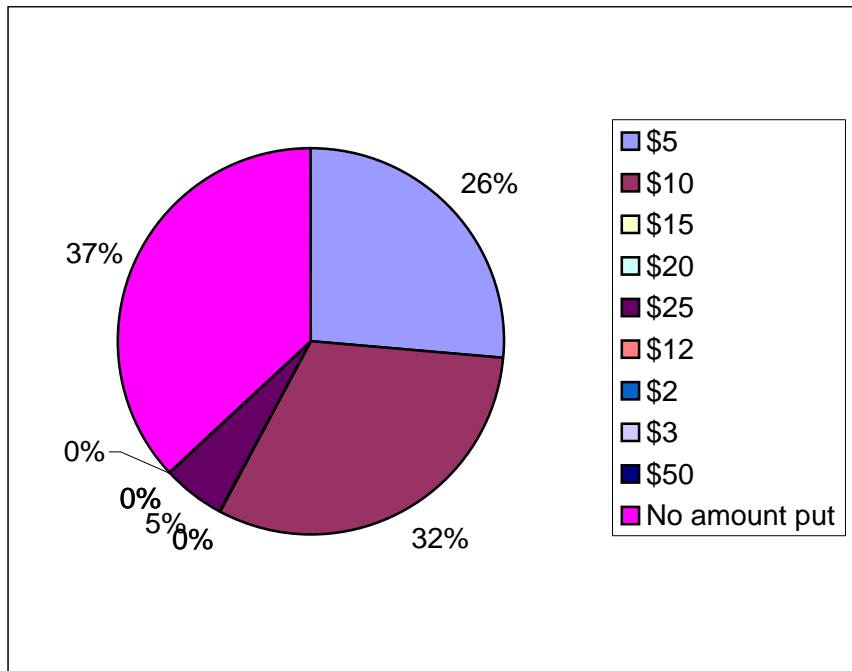
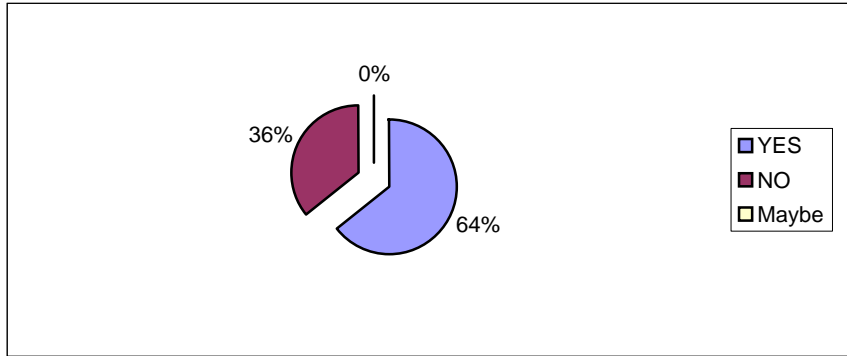
| | Total |
|-----------------------|-------|
| YES | 17 |
| NO | 12 |
| If yes how many times | |
| 1x | 0 |
| 2x | 2 |
| 3x | 0 |
| 4x | 0 |
| 5x | 1 |
| 6x | 0 |
| 7x | 1 |
| 8x | 1 |
| 9x | 0 |
| 10x | 0 |



Question 5

Would you be willing to pay for HHW disposal if a fee was charged for this event ?

| | Total |
|--------------------|-------|
| YES | 18 |
| NO | 10 |
| Maybe | 0 |
| If yes, how much ? | |
| \$5 | 5 |
| \$10 | 6 |
| \$15 | 0 |
| \$20 | 0 |
| \$25 | 1 |
| \$12 | 0 |
| \$2 | 0 |
| \$3 | 0 |
| \$50 | 0 |
| No amount put | 7 |



Question 6

Are you aware of any of the following stormwater management efforts?

Total

| | |
|-------------------------|---|
| Think blue ME | 9 |
| Inter local storm group | 2 |
| CE storm water prog | 7 |
| Longcreek restoration | 4 |
| Yard scape program | 4 |

